

WELCOME TO HAVEN KAKUMÄE

NEW Haven Kakumäe yacht harbour is located on the west side of Tallinn in Kopli Bay



You are warmly welcome to visit BRAND NEW yacht marina in western Tallinn, located in Kopli bay. Haven Kakumäe is a safe harbour, well-guarded from weather and waves. Kopli bay is very low on commercial traffic. Our new marina is equipped by the most modern floating piers and booms, which means that berthing is safe and easy.

Our staff is very experienced and you will be serviced in the best possible way. How about a warm sauna or shower? Yes, we have it. At the Haven Kakumäe marina you have the possibility to rent a car for a city or a country tour and we have bicycles for rent in case you want to scout the Kakumäe or Tallinn by bike. Next to the yacht club, the trendy Food-Attack offers small bites or a nice dinner fresh from the garden. Also, we have beach football, beach tennis and volleyball fields at your service.

WE ARE TRULY LOOKING FORWARD TO HAVE YOU AS OUR GUEST THIS SUMMER.

Guest marina berths are located right at the front of the yacht club and Harbour Office [here](#).

Guest visit prices can be found [here](#).

Guest visit berths are locked and under video surveillance.

Included in the rental price:

- Electricity
- Water
- WiFi
- Sauna
- Shower
- WC

Additional services:

- Laundry service
- Fuel station 24/7
- Car rental
- Bicycle rental
- Beach football
- Beach tennis
- Beach volleyball

Please inquire for Special Pricing on squadron drives.

2017 EVENTS

7.07.2017 – Stig Rästa concert – full program and tickets here

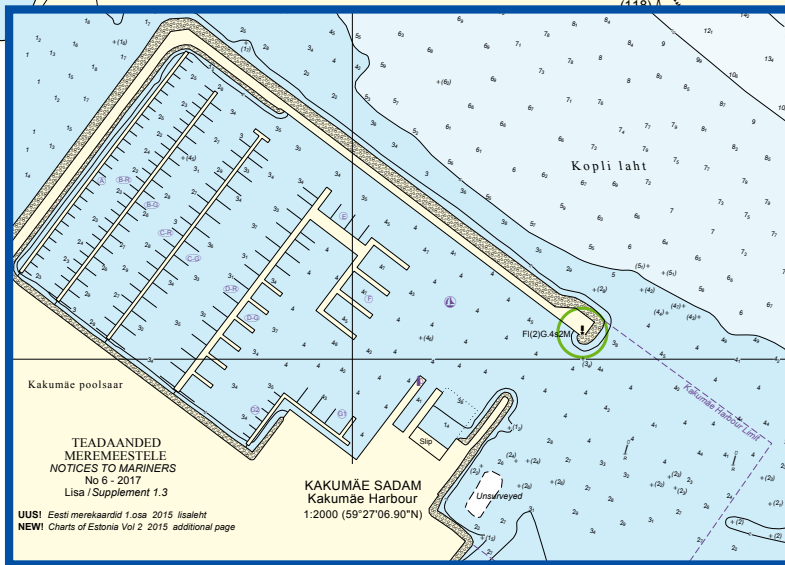
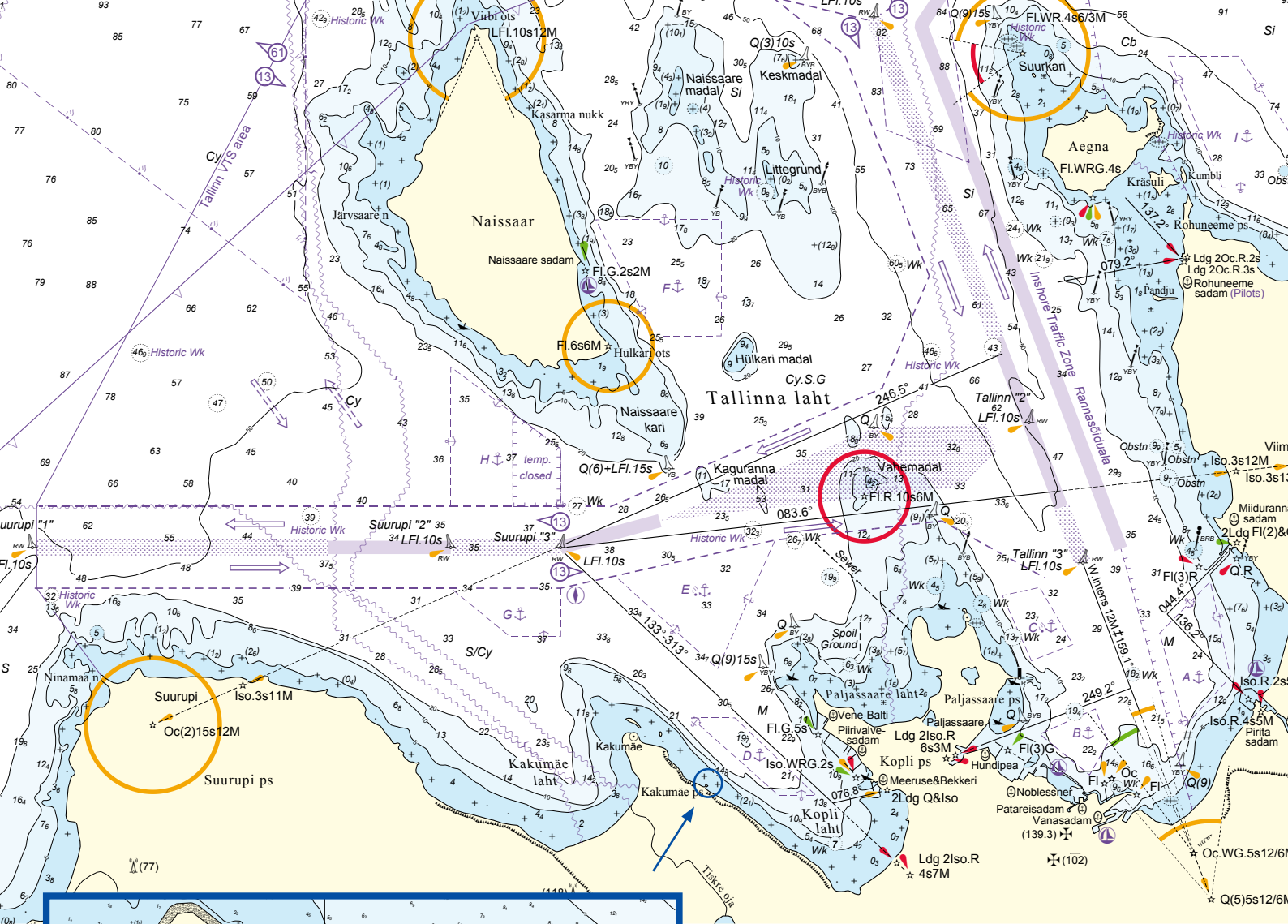
15-18.07.2017 – Tallinn Maritime Days

26.08.2017 – Ancient Lights Festival

Follow for more information: [f HavenKakumae/events/](#)

www.havenk.com
+372 6 777 444





LOCATION PICTURE AND COORDINATES

Radio channel: VHF 10

Radio calling: Haven Kakumäe

Phone: + 372 6777 444

Email: marina@havenk.com

Internet: www.havenk.com

Coordinates: 59°27'04.01"N 24°36'25.09"E

DISTANCES FROM HAVEN KAKUMÄE YACHT HARBOUR:

- Helsinki - 48 NM
 - Bagaskär (Ekenäs Archipelago) - 35 NM
 - Lautasaari - 44 NM
 - Hanko 56 NM
 - Naissaar Island - 6.0 NM
 - Aegna Island - 8.5 NM
 - Dirhami - 41 NM
 - Kelnase (Prangli island) - 21 NM
- Tallinn City Center – 15 minutes drive by car



www.havenk.com

+372 6 777 444

HAVEN
KAKUMÄE